

SKI ARMADILLO | LUXURY CATERED CHALETs IN VERBIER



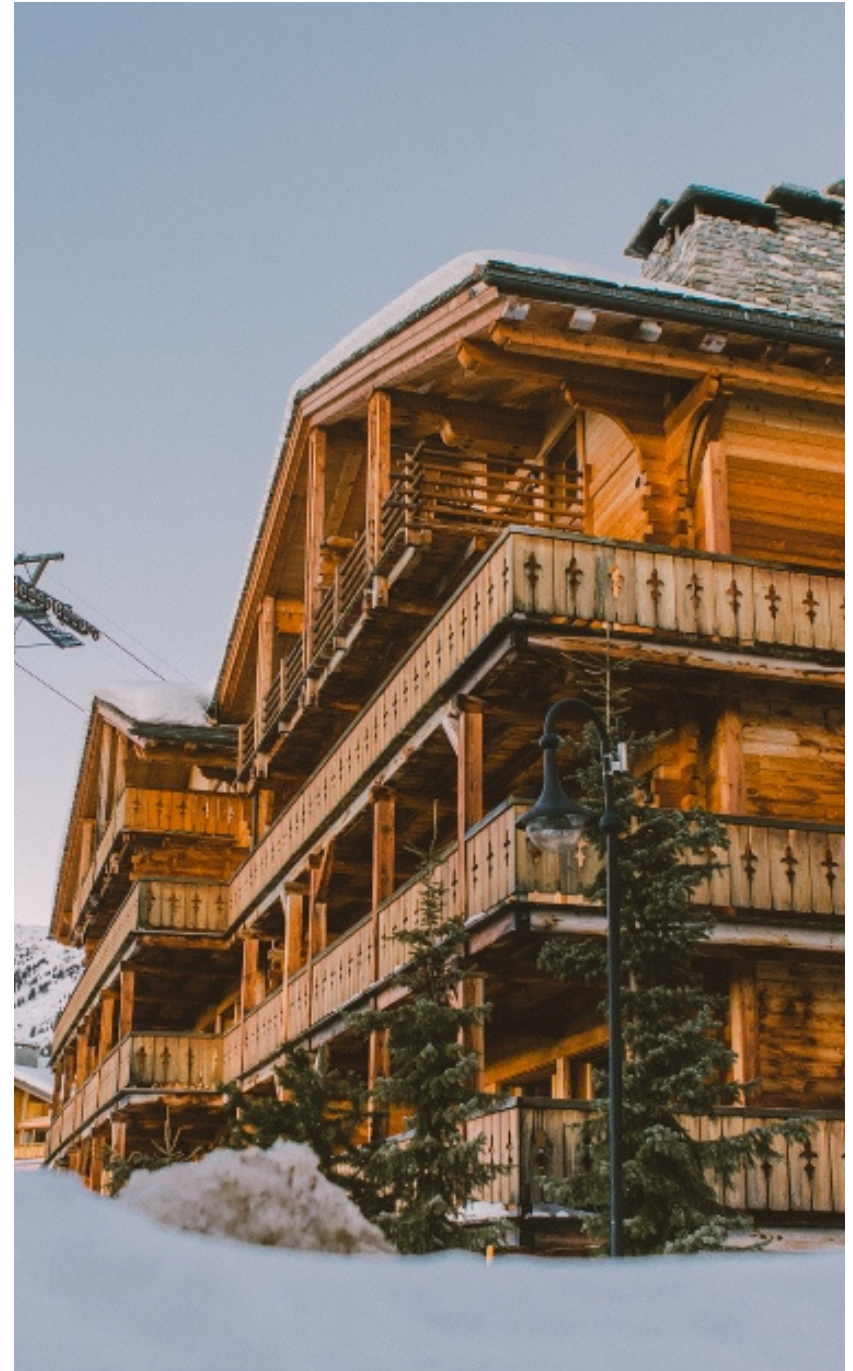
# CHALET SKYVIEW

*Verbier, Switzerland*



# CHALET OVERVIEW

- A stunning penthouse apartment that can sleep up to 18 guests
- 8 en-suite guestrooms, 4 with balconies
- Huge open-plan living areas
- 3 lounge areas, both with open-fires
- Large south-facing balconies
- 3 x indoor parking spaces
- 2 minute walk to the Medran
- 4 minute drive to Place Centrale



# DESCRIPTION

Chalet Skyview is the perfect choice for large groups or multiple families, as it boasts 8 en-suite bedrooms, 3 living rooms, open-plan social areas and stunning views across the Petit Combin Mountain range. The lower floor comprises two living areas and a dining area, which open onto the large South West facing balcony. This floor also accommodates three en-suite bedrooms which can be either configured as twin or double bedrooms (zip and lock bed configuration). A stairway from one of the living areas leads you to the upper floor of the apartment, where you will find the further two large bedrooms with en-suite bathrooms. These both access the second balcony. The neighbouring penthouse apartment, with its own entrance, has 2 double bedrooms and one twin bedroom. All three bedrooms are spacious with en-suite bathroom facilities. Light pours in through the French windows which lead onto the north-facing balcony, which all three bedrooms share. In addition to these rooms, Chalet Sophia has a mezzanine level with a bedroom/play room/snug room (with head restriction), which can accommodate a further 2 guests. Chalet Skyview is actually made up of two beautifully appointed apartments, Skye and Sophia, which can be combined to accommodate up to 18 guests. Due to the size of Chalet Skye, all 18 guests can enjoy breakfast, afternoon tea and their evening meals together, if required.



































# CHALET LAYOUT

## GUESTROOMS

- 4 x double rooms with en-suite facilities and private balcony
- 1 x twin/double room with en-suite facilities and private balcony
- 3 x twin/double rooms with en-suite facilities
- 1 x Mezzanine twin with private facilities

## LIVING AREA

- Open-plan kitchens, dining area
- 3 x lounge areas, both with open-fires
- Full length South-facing Balcony

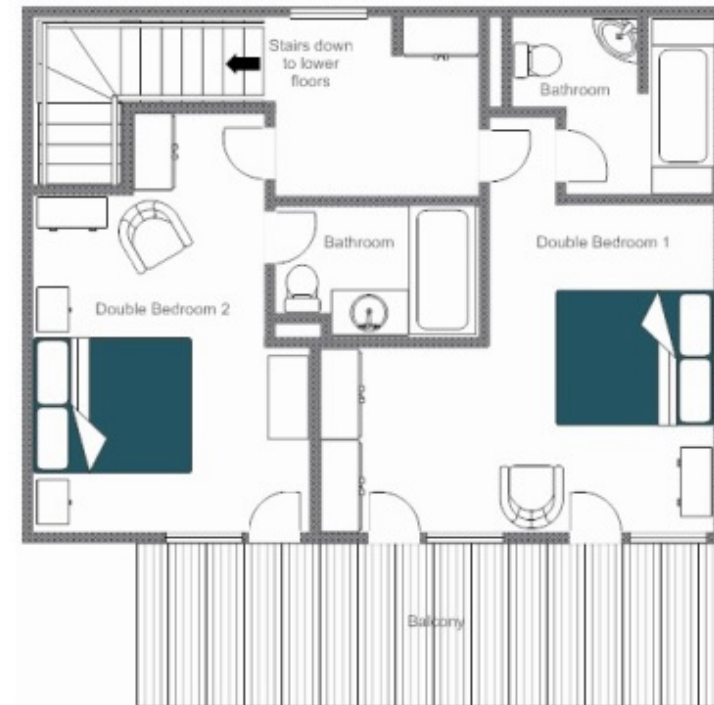




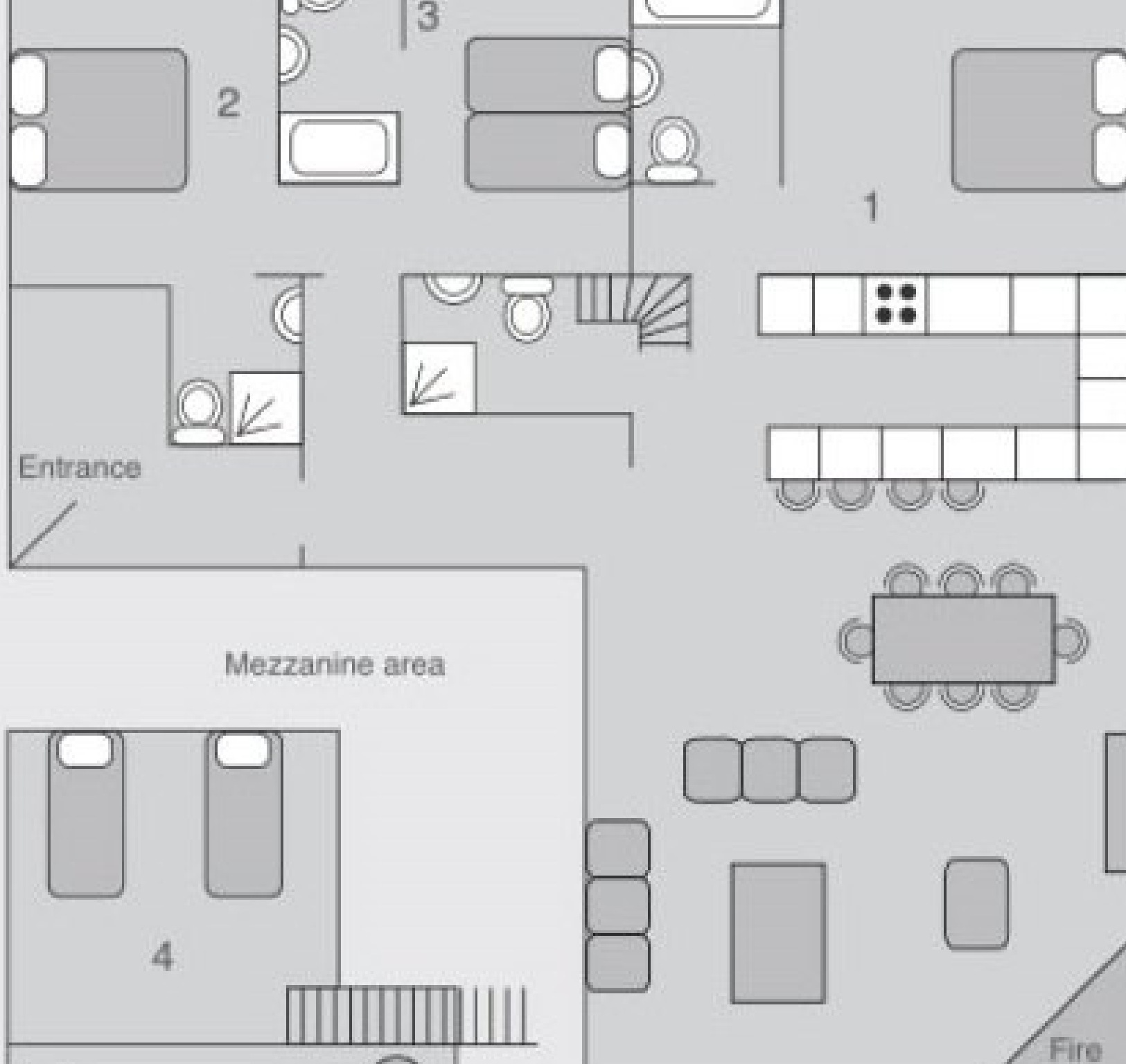
SKYE - LOWER FLOOR, FOR ILLUSTRATION PURPOSES ONLY



SKYE - TOP FLOOR, FOR ILLUSTRATION PURPOSES ONLY









# WHAT'S INCLUDED

The following inclusions are based on a 7 night catered chalet stay:

- Exclusive use of the Chalet, with a Personal Chef and Chalet Host
- Drinks reception and canapes on five nights
- Gourmet three-course dinner on five nights
- Earlier supper time for children, if required
- Selected beers and wines to complement your evening meals
- Cooked breakfast 5 days a week. Self-Serve, Continental breakfast on the other 2 days
- Afternoon tea, with freshly baked selections, served five days a week
- Daily Chalet cleaning
- Pre-arrival and in-resort concierge service





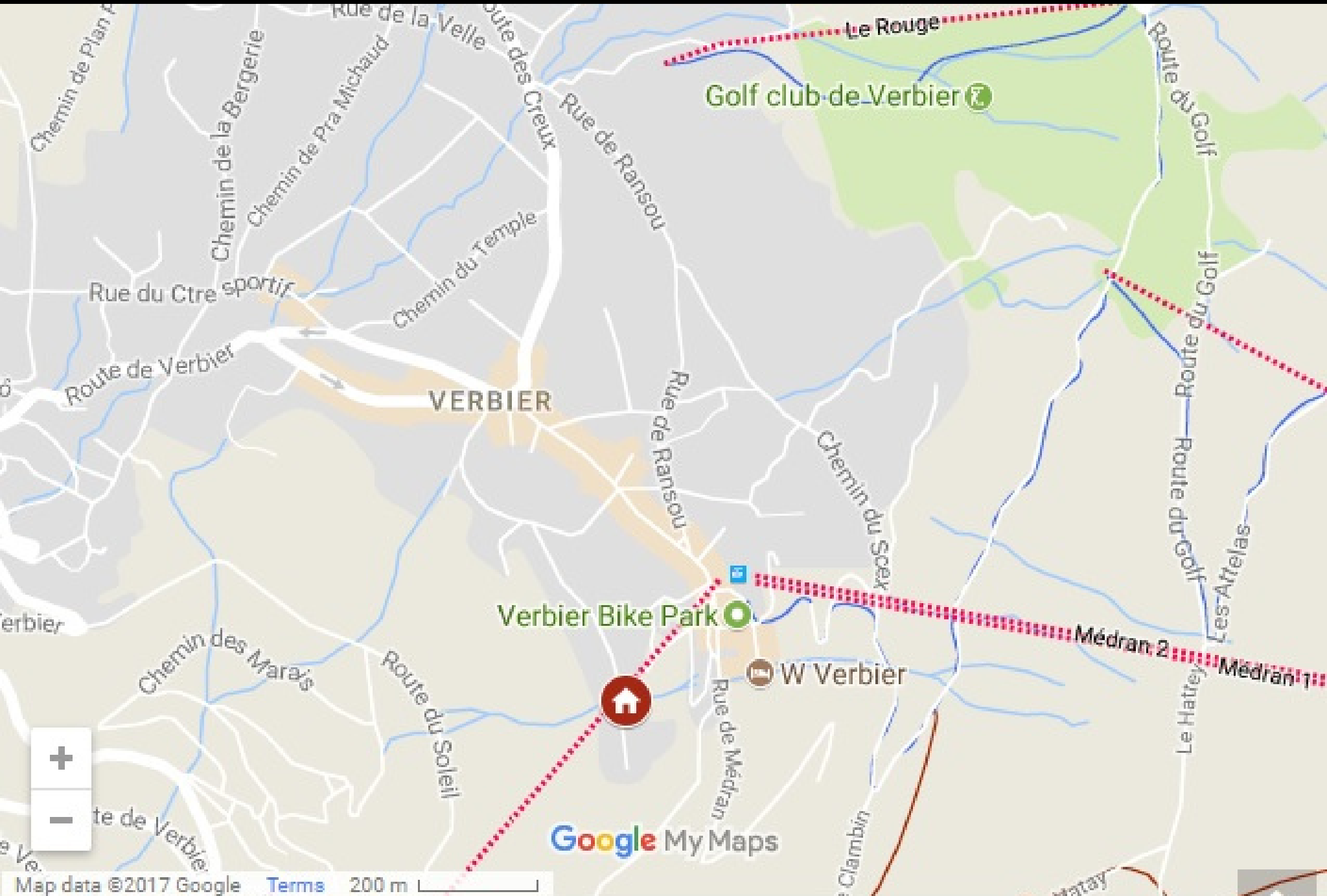
# ADDITIONAL SERVICES

Our concierge team are on-hand to assist with all other elements of your Ski Armadillo winter sports holiday. These include, but are not limited to;

- Private Airport Transfers
- Lift Passes
- Rental Equipment Hire
- Private / Group Ski Lessons
- Childcare / Nanny Service
- Paragliding and Heli-Tours
- Non-Ski Activities
- Restaurant Reservations







# CONTACT US

**T:** 01799 586652

**E:** [info@skiarmadillo.com](mailto:info@skiarmadillo.com)

**W:** [skiarmadillo.com](http://skiarmadillo.com)



ski armadillo